

# Rose Creek Nature Preserve



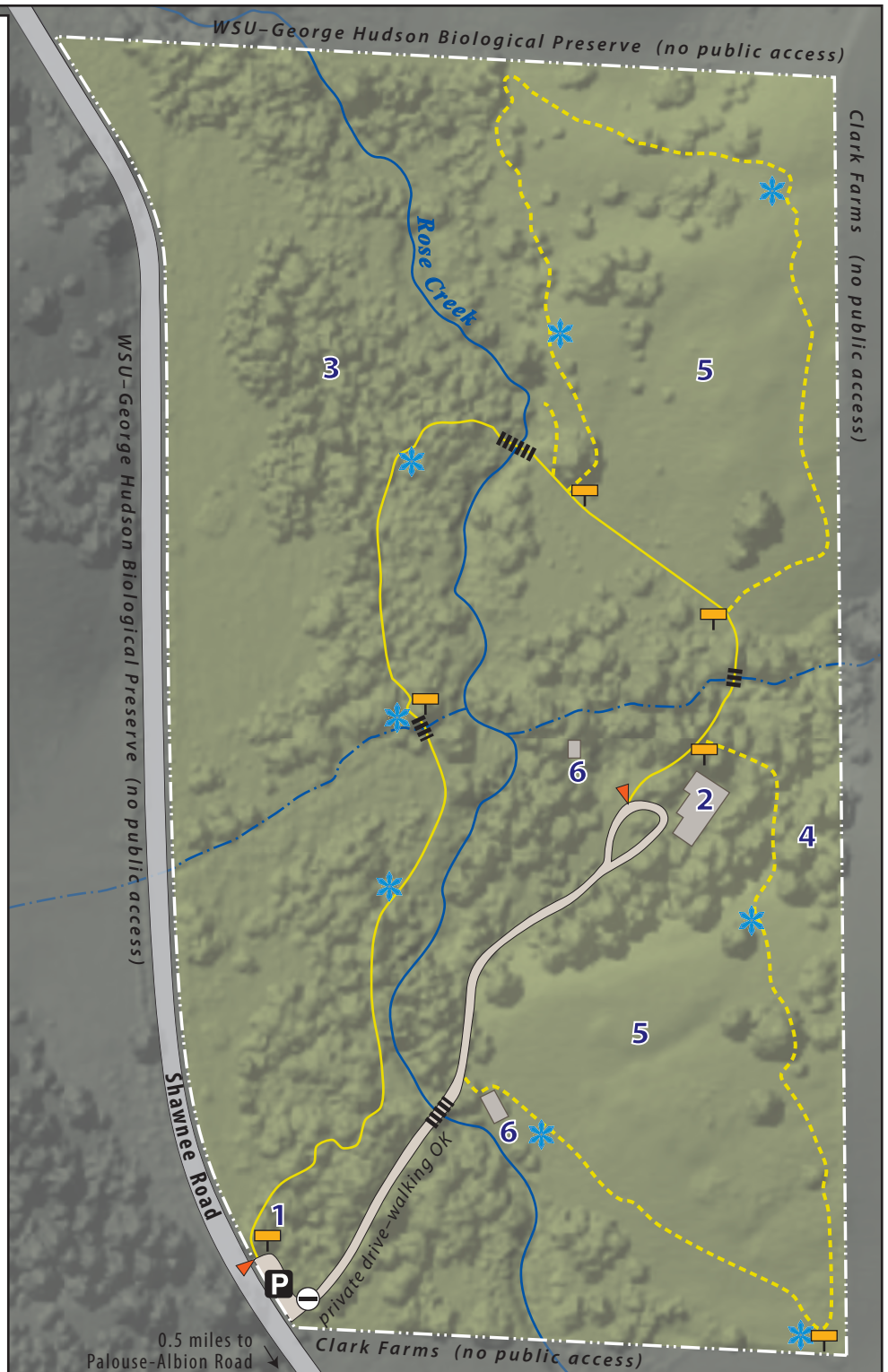
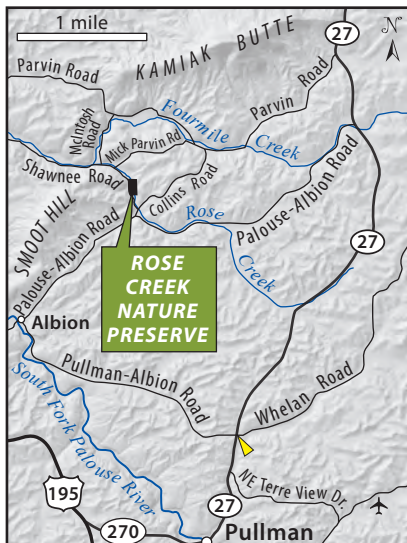
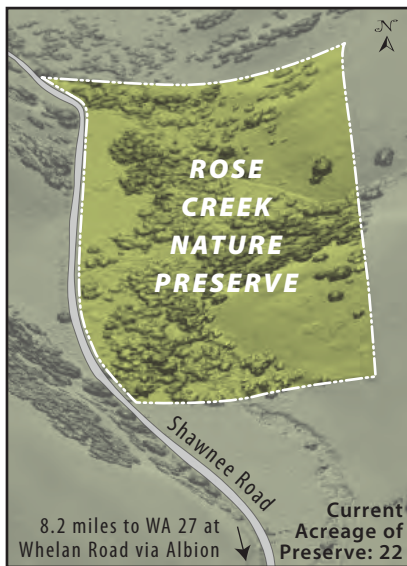
Palouse-Clearwater  
Environmental Institute

## Features

- 1 Welcome Kiosk
- 2 Visitor Center and private residence (Bess Hudson Interpretive Center)
- 3 Lowland Forest
- 4 Upland Forest
- 5 Palouse Prairie Remnant
- 6 Building (Equipment Shed)

## Legend

- parking area
  - trailhead access
  - location sign
  - no public road access
  - point of interest
  - walking trails
  - low gradient pathway
  - foot bridge
  - nature preserve boundary
- 0 100 200 300 feet  
 0 0.02 0.04 mile



For your safety and to protect the animals and plants living here, please observe the following:

- Travel by foot only and stay on official trails and walkways
- No camping, fires, or cutting wood—pack out all garbage
- Please refrain from using recorded bird calls
- Leave pets at home and do not take, disturb, or introduce any animals or plants
- No smoking, alcohol, weapons, or drones

If you notice any suspicious, dangerous, or illegal activity or condition, please notify PCEI. In an Emergency, call 911 or Whitman County Sheriff Department at 509-397-6266.

**Mail:** PCEI, PO Box 8596, Moscow, ID 83843

**Email:** [info@pcei.org](mailto:info@pcei.org)

**Visit:** [www.pcei.org](http://www.pcei.org)

**Call:** (208) 882-1444

**Follow us:**

Map created by Chelsea M. Feeney, 2021  
Custom Cartographics ([www.cmcfeney.com](http://www.cmcfeney.com))